

WELCOME FROM THE BOARD OF TRUSTEES

We warmly welcome you to our Temple, no matter whether your interest is to observe, to learn, or to worship. Our website, <http://lansingtemple.org>, lists the many services offered by the Temple. We invite you to take full advantage of these services. If you wish to get actively engaged in Temple activities, please contact any member of the Board.

Since its grand opening in 1994, our Temple has been serving the mid-Michigan Hindu and Jain families very well. It has brought our community together, providing us a place to practice our religion and cherish our culture. It has fostered numerous religious, spiritual, and social programs; it has provided a platform to introduce Indian religion and culture to our children; and it has helped mobilize our community to acts of charity and compassion for others. Over the years, the needs of the community have grown. To meet these needs, the Temple is presently engaged in a construction project, described elsewhere in this brochure, with an estimated cost of \$850,000.

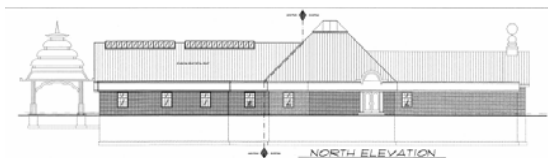
Our Temple is run entirely on voluntary donations from members of the community. Your donation will be crucial for continuing our day-to-day operations and completing the Temple. We appeal to you for your generous financial support.

May God's blessings be with us all.



Ground-breaking on September 15, 2007 for the Temple completion project.

TEMPLE COMPLETION PROJECT



The Temple completion project involves the addition of about 4300 sq. ft. of floor area on the first floor and 4300 sq. ft. of area in the basement. The drawing above shows the front view of the completed Temple, with a future Gopuram at the entrance. Use of natural lighting in the foyer and large windows will enhance the internal ambience of our Temple. Steps will be taken to architecturally blend the additions with the existing structure.

The new structure will create a larger hall, which will include a yagnashala (fire pit) for Havans as well as weddings and other religious ceremonies. Four new multi-purpose rooms will provide space for children's classes, religious classes, yoga, nursery, green room for artists, etc. There will be additional restrooms for men and women, both upstairs and downstairs. An elevator will be provided for easy access to the basement. Finally, a fully functional kitchen and dining hall with seating for 250 in the basement will accommodate devotee needs to cook Prasad at the Temple as well as increase the attractiveness of the Temple as a rental facility for special events.

The expected completion date of the project is Summer 2008.



A makeshift arrangement for performing Havan, dating back to 1994, continues to be in use in 2007.

IMPACT OF THE TEMPLE

For well over a decade, Bharatiya Temple of Lansing has had a significant impact on both the Hindu/Jain community and the larger community in mid-Michigan.

- **Religious Activities:** The Temple serves the diverse religious needs of both individual families and the temple community as a whole, with services offered both at the Temple and in individual homes.
- **Spiritual and Cultural Activities:** Each year the Temple hosts several spiritual talks. Cultural activities – music, dance, and secular festivals – are also sponsored.
- **Exposure of our children to Indian religious and cultural traditions** gives them a sense of belonging and builds the devotee base of the future.
- **Educational Activities:** Several free educational classes and discussion sessions are conducted, for both adults and children – e.g. Yoga, Gita, and Bala Vihar classes.
- **Socialization:** As the only public building belonging to the Indian community in the greater Lansing area, the Temple is a place for devotees to interact, form friendships, and welcome newcomers.
- **Cross-cultural exposure** for the general mid-Michigan community, e.g. visits from the general public, local schools and colleges, and churches and other faith-based groups.
- **Giving back to the community:** Monthly feeding at a local soup kitchen for homeless people; community blood drives; raising substantial funds each year for the Greater Lansing Food Bank.



Sunday Bala Vihar class at the Temple.

TEMPLE HISTORY

Bharatiya Temple of Lansing has been a functioning temple since March 12, 1994. One of about seven temples in Michigan, it serves the religious needs of the Hindu and Jain communities of mid-Michigan.

Besides the March 1994 inauguration, some other important dates in the Temple's history are:

- Consecration of Hindu deities in June 1998
- Consecration of Jain Tirthankaras in May 2000
- Consecration of Navagrahas in July 2006
- Ground-breaking ceremony (Bhoomi Pooja) for temple completion in September 2007



Our two priests, Balasubramanian Kannan (right) and Surendra Bhardwaj (left), serve the community well.

- Goals of the Temple are to promote:
- Religious Activities: Puja, Bhajan, Satsang, and Havan
 - traditions for future generations
 - Hindu and Jain religious identity and humanitarian service to the local and world community
 - Harmonious relations among all the faiths



Murtis of Bhagavan Mahavir and Bhagavan Parsvanath in the Jain sanctum.

WAYS TO CONTRIBUTE

- ❖ Grand Benefactor
 - Life Member – Pledge \$1,000 for 5 years
 - Member – Pledge \$3,000 Year 1, \$2,000 Year 2

- ❖ Pledges **\$500 & above**
 - Designate for Capital Improvements
 - Designate for Operations

- ❖ Sponsor-A-Day **\$400/Year**
 - Select a day of your choice in the year (Birthday, Anniversary etc.)
 - Puja to deity of your choice; prasad mailed home, if not present

- ❖ Dollar-A-Day **\$365/Year**
 - Pay at the start or end of year
 - Drop a dollar in your piggy bank and bring it every time you visit

- ❖ Membership **\$150/Year**
 - Everyone should be a member – It's your Temple!

- ❖ Hundi (Cash Boxes)
 - Every time you visit, God blesses you
 - Every time you visit, donate cash in Hundi
- ❖ Priest Services (Puja, Religious Ceremonies, Archana)
 - At Temple
 - At home

- ❖ Donate your time by volunteering to help with temple programs and temple administration.



The Temple's Hindu deities, all having equal status, were installed in their present configuration in June 1998.

We warmly welcome you to our Temple, no matter whether your interest is to observe, to learn, or to worship.

BHARATIYA TEMPLE

OF LANSING

Hindu Deities

Sri Ganesha, Sri Uma-Maheshvara, Sri Amba Mata, Sri Rama Parivar, Sri Radha-Krishna, Sri Venkateswara, Sri Karttikeya, and Navagrahas

Jain Tirthankaras

Bhagavan Mahavir and Bhagavan Parsvanath

Temple Darshan Hours

Mornings Daily M-F 9 AM to 1 PM
Mornings Weekends 9 AM to 2 PM
Evenings – All Days 5 PM to 9 PM

Bharatiya Temple of Lansing

955 Haslett Road, Haslett, MI 48840
Phone: 517-339-6337

www.lansingtemple.org